

# TECTONICGOLD



In the Shadow of Giants  
JULY 2021

# DISCLAIMER



The Presentation is a summary only and does not contain all the information about the Company's assets and liabilities. Although the information contained herein is based upon generally available information and has been obtained from third-party sources believed to be reliable, the Company does not guarantee its accuracy, as such information may be incomplete or condensed.

To the extent permitted by law, the Company and its officers, employees, agents and advisors do not accept liability to any person for any direct, indirect or consequential loss or damage arising from the use of this material.

This Presentation does not constitute investment advice. Neither this Presentation nor the information contained in it constitutes an offer, invitation, solicitation or recommendation in relation to the purchase or sale of shares in any jurisdiction.

Potential investors should not rely solely on this Presentation and should conduct their own investigations and perform their own analysis in order to satisfy themselves as to the accuracy and completeness of the information, statements and opinions contained herein.

## **Forward Looking Information**

This Presentation may contain forward looking and other subjective information. Such expectations, estimates, projections and information are not a guarantee of future performance and involve unknown risks and uncertainties.

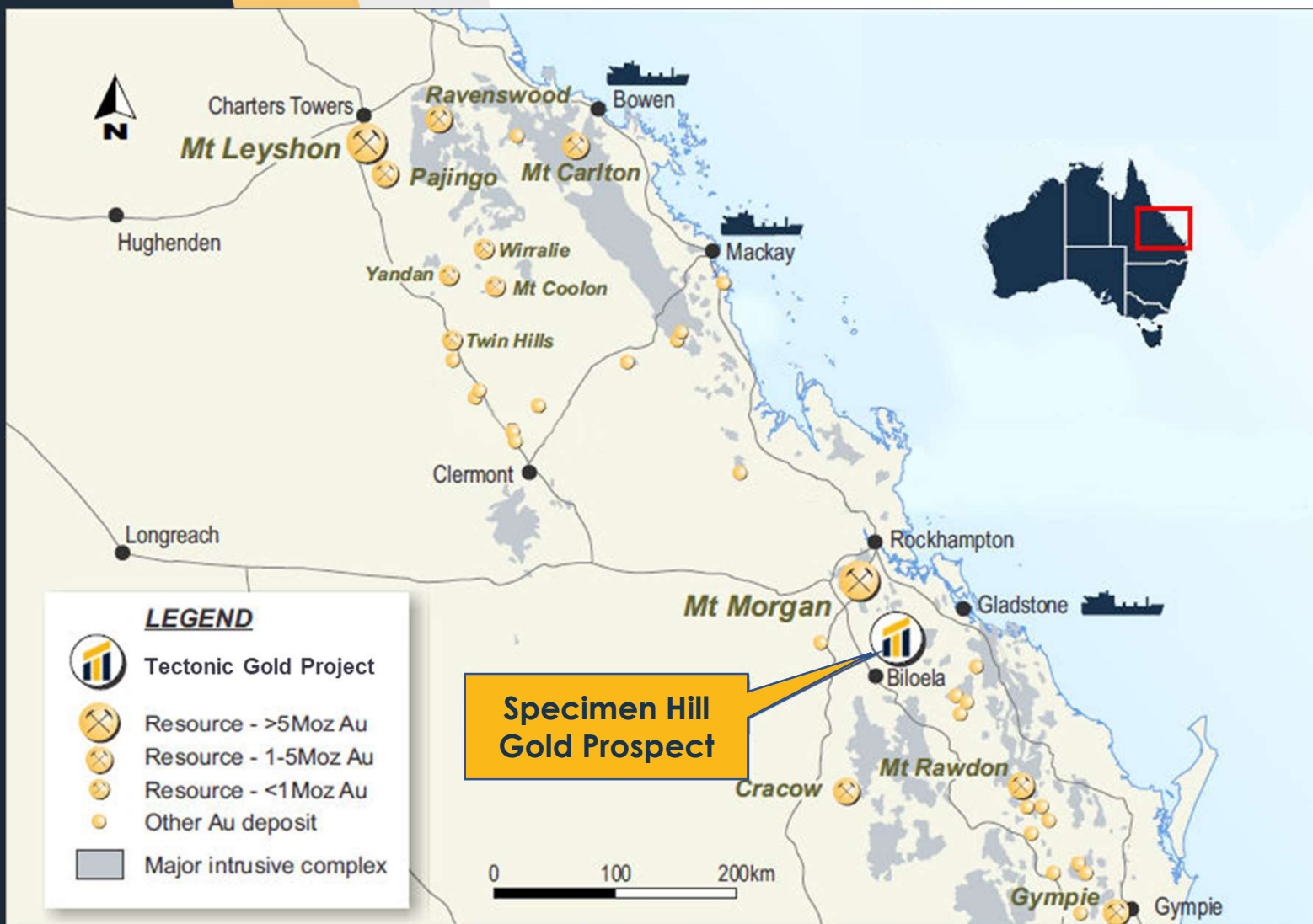
Actual results and developments will almost certainly differ from those expressed or implied and you should make your own assessment of the expectations, estimates, projections and the relevant assumptions and calculations upon which the opinions, estimates and projections are based.

No representation or warranty, express or implied, is given as to the accuracy of the information or opinions contained in this document and no liability is accepted by the Company or any director, member, officer, employee, agent or adviser for any such information or opinions.

The Company does not undertake any obligation to update or revise any information or any of the forward-looking statements in this Presentation or any changes in events, conditions or circumstances on which any such forward looking statement is based.



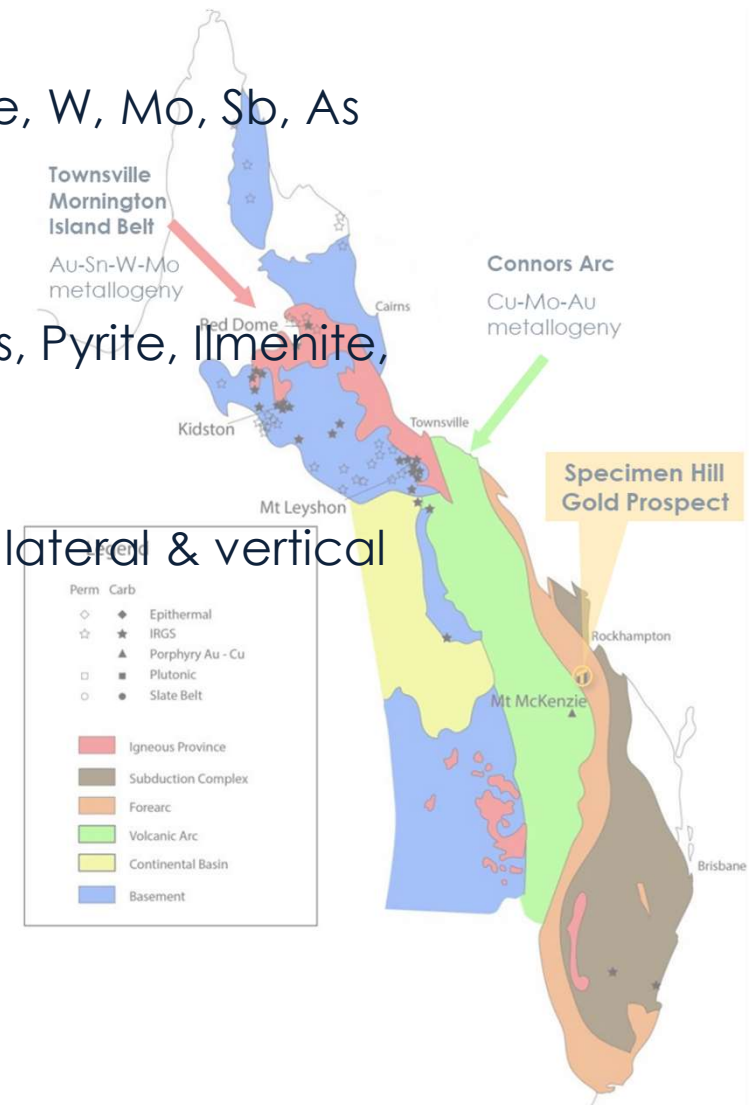
# PROJECT LOCATION





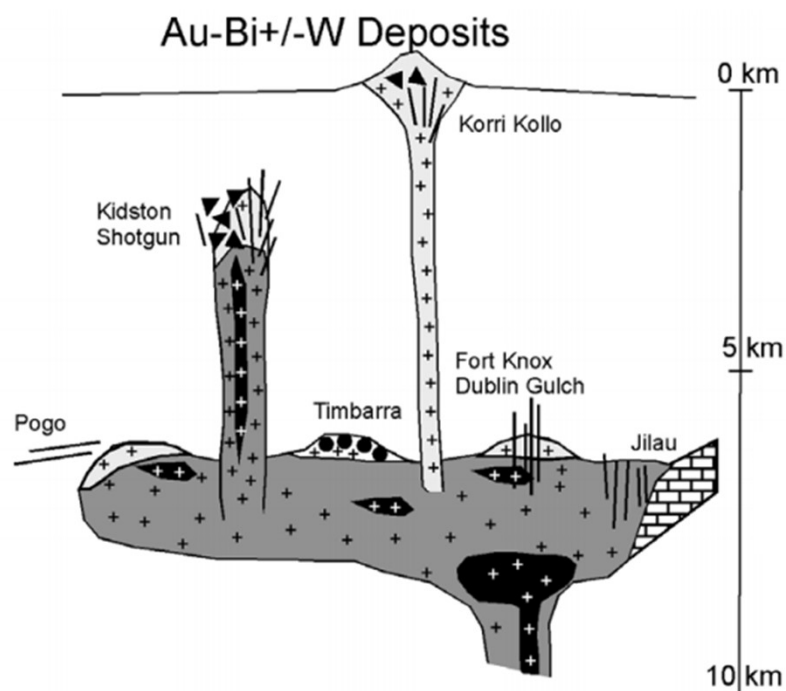
# IRGS CHARACTERISTICS

- Gold variably combined with Bi, W, Te, W, Mo, Sb, As
- Low sulphide content (<5%)
- Reduced mineral assemblage (Po, As, Pyrite, Ilmenite, no Mag/Hem)
- Deposit & metal assemblage zoning: lateral & vertical
- Reduced I-type intrusives
- Intermediate to felsic
- $W \pm Sn \pm Mo$  provinces
- Continental tectonic settings





# IRGS CHARACTERISTICS



- Sheeted veins, stockworks, breccias, disseminations, skarns, replacements, fissure veins
- Lateral and vertical metal zoning
- Proximal Au-Bi-Te > As-Sb-Au > Ag-Pb-Zn Distal
- W±Mo at depth
- Au-Bi-Sb at shallower levels

Granites associated with Au-Bi+/-W  
Rb/Sr 0.1 to 1.0  
Fe<sub>2</sub>O<sub>3</sub>/FeO 0.1 to 0.6  
Metaluminous to peraluminous  
I-type

Granites associated with W+/-Sn  
Rb/Sr 0.1 to 10  
Fe<sub>2</sub>O<sub>3</sub>/FeO 0.1 to 2.0  
Peraluminous to locally metaluminous  
I-type and S-type

Granites associated with Sn+/-W  
Rb/Sr 1 to 100  
Fe<sub>2</sub>O<sub>3</sub>/FeO 0.01 to 0.5  
Peraluminous  
I-type and S-type

## Granite types



Diorite



Granodiorite



Granite



Highly Fractionated Granite

## Deposit styles



Pegmatite



Disseminated  
Greisen



Breccia



Skarn



Sheeted



Flat



Stockwork

Veins

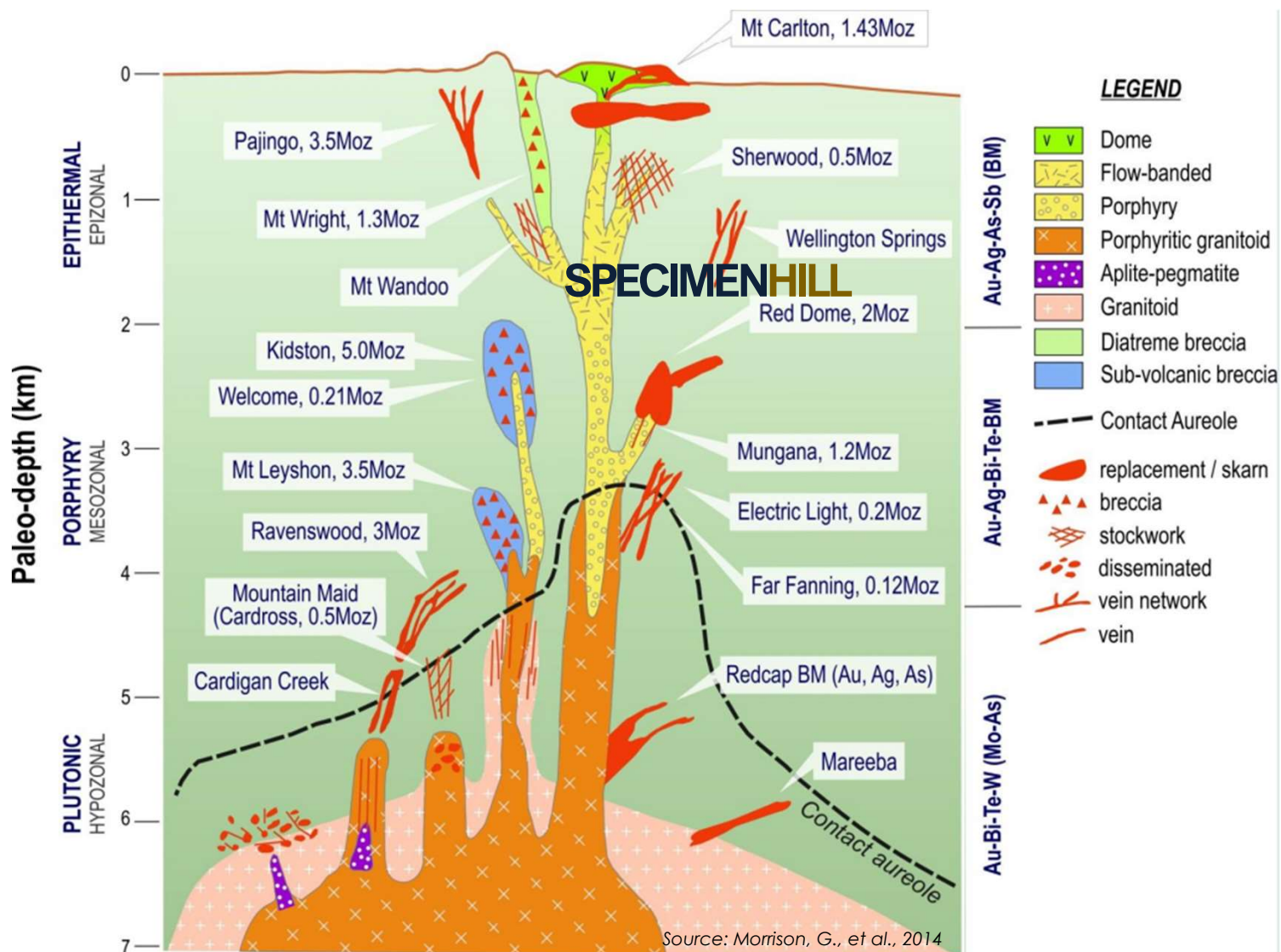
Source: Intrusion-related Gold Deposits, Baker 2005



# GLOBAL IRGS

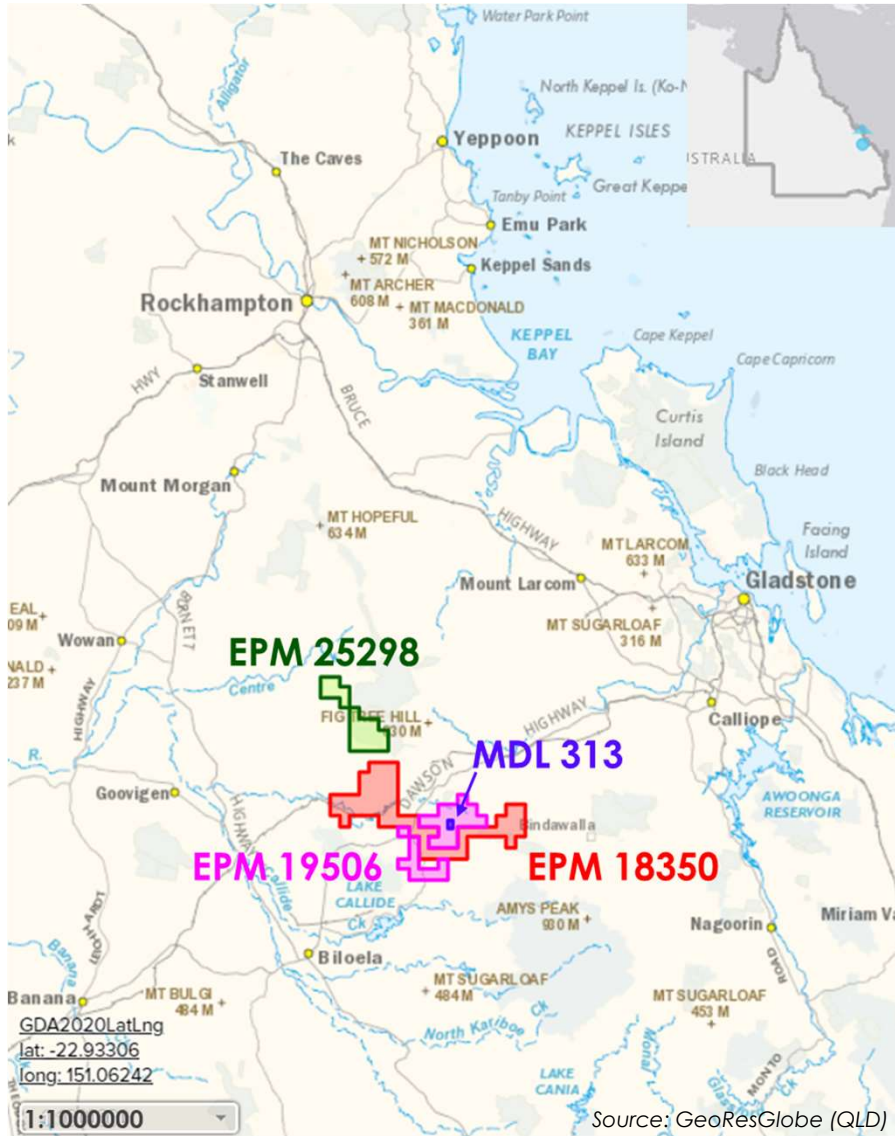


# NORTH QUEENSLAND IRGS





# TECTONIC TENEMENTS



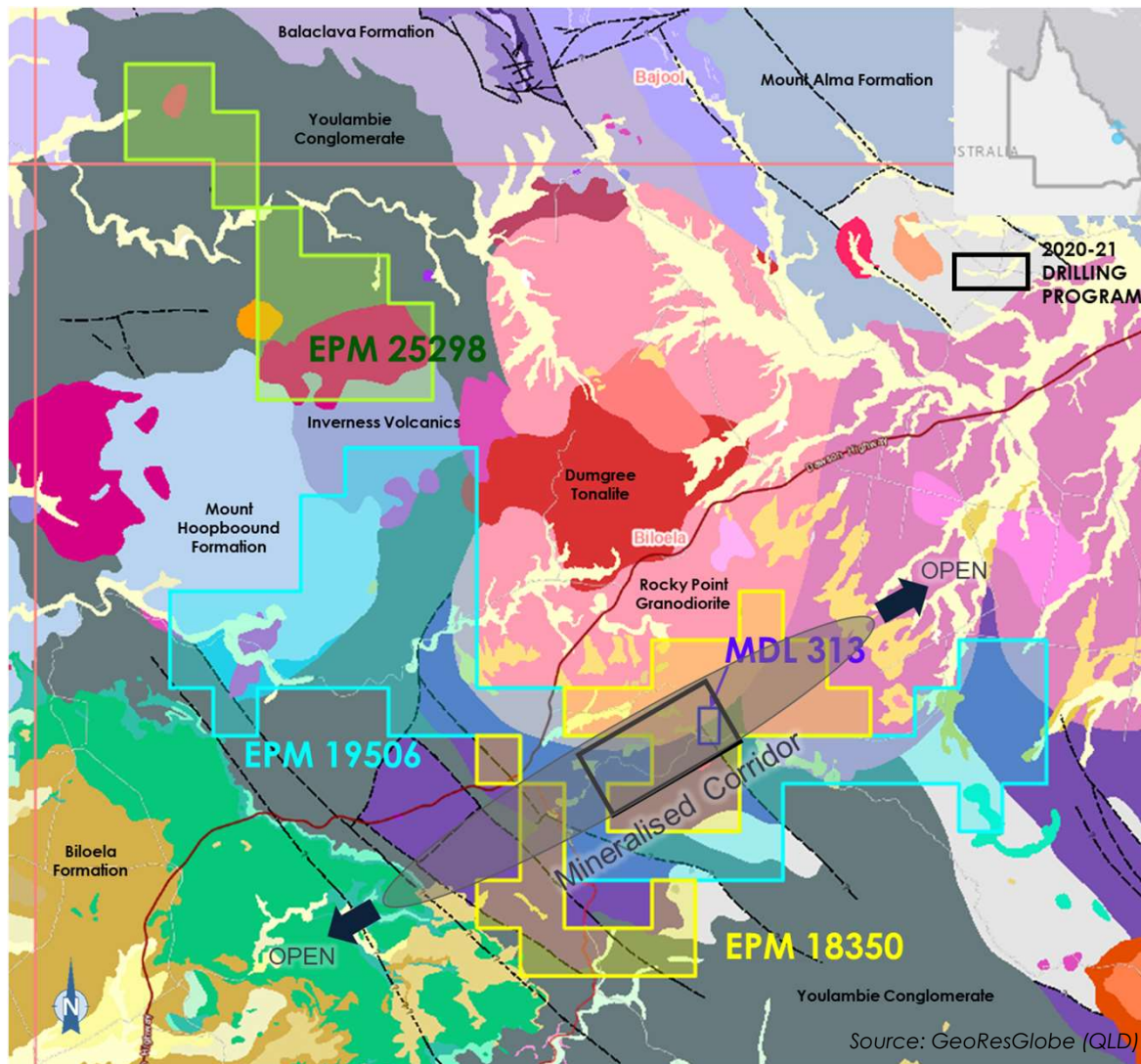
- Three (3) exploration permits [EPM]
- One (1) mineral development licence [MDL]
- 100% interests across 350km<sup>2</sup>
- Completed a systematic & rigorous grassroots exploration campaign including:
  - Geological & structural geology field work
  - Geochemical surveys & mapping
  - Geophysical surveys
  - RC & Diamond drilling with a total of 2,500 metres drilled to date

Tectonic have identified a **mineralised corridor** within its tenement areas that is **completely undrilled** at depth with **multi-million-ounce** potential.





# MINERALISED CORRIDOR



- Specimen Hill geological & grade continuity to depths of over 100m from surface
- 4km long x 500m wide zone
- Open along strike and at depth

***...World class  
potential***

**TECTONICGOLD**

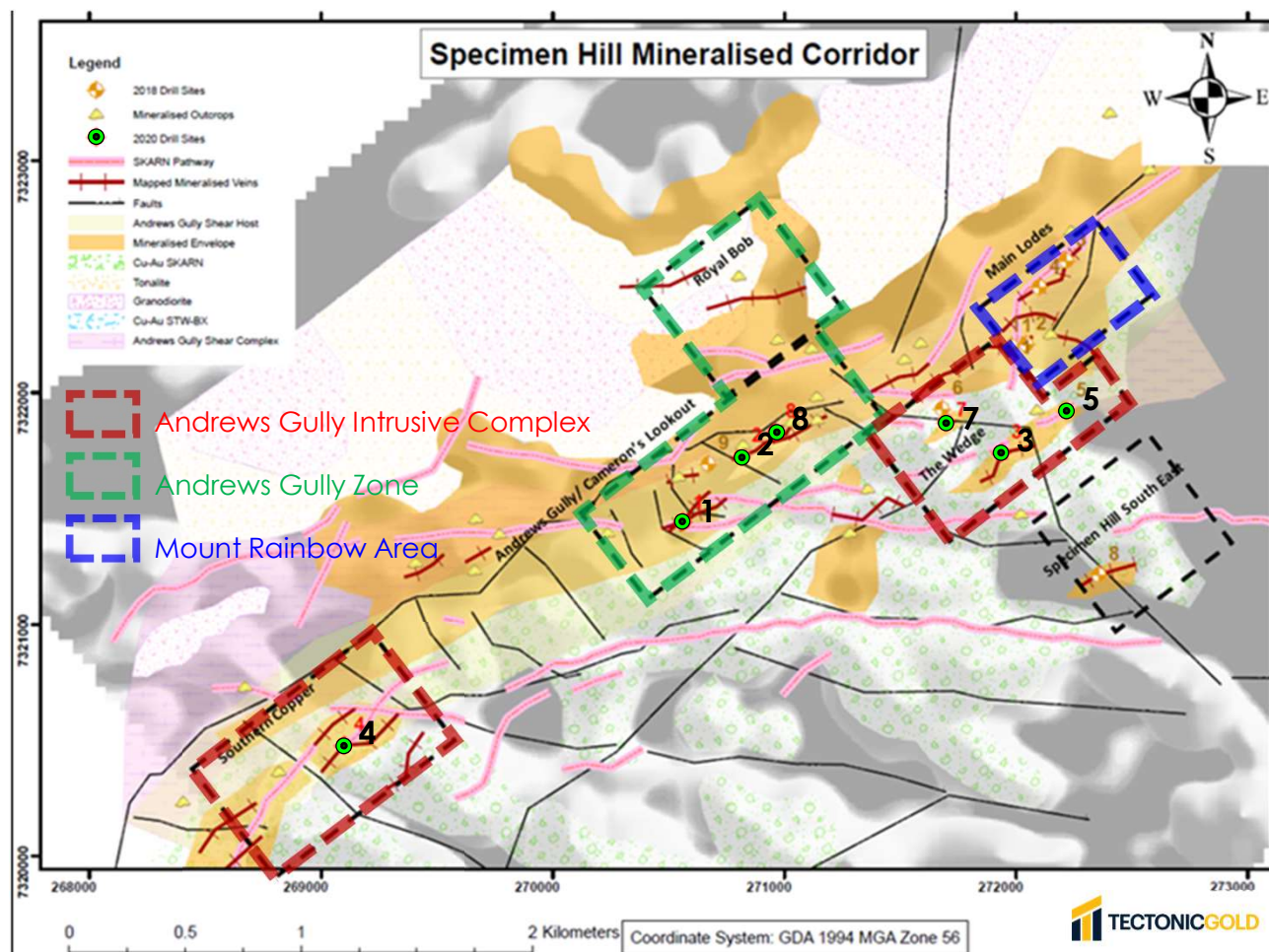


# MINERALISED CORRIDOR

Geophysics & geochemistry outlined three

**“Areas of Interest”**  
at Specimen Hill:

1. **Mount Rainbow Area**
2. **Andrews Gully Intrusive Complex Area**
3. **Andrews Gully Zone Area**



**TECTONICGOLD**

Source: Tectonic

**...Deeper drill targets (+500m) identified for follow-up**





## Geology

- ✓ Global analogues (HS/IS Epithermal + Porphyry Deposit) show multi-million-ounce potential => size, scale and grade
- ✓ Re-interpretation study synthesis (structure, drilling & geophysics) confirms World Class Intrusion Related Gold System (IRGS) prospectivity
- ✓ Along trend from significant operating mines
- ✓ Open along strike (+8km) and at depth (+500m)



Azurite & malachite in weathered andesite-calcisilicate





## Location

- ✓ Queensland, Australia - low sovereign risk, favourable jurisdiction
- ✓ Excellent access
- ✓ No Landholder or Native Title issues
- ✓ Majors pegging adjacent leases

The Silo, Biloela, Queensland

Source: Civil Support



## Development Pathway

- ✓ Near Term Mineral Resources
- ✓ <12 Months to JORC
- ✓ Medium-Term Production
- ✓ 12–24 months to Mineral Reserves
- ✓ 24–36 months to Mining Lease
- ✓ 36–60 months to Production

Drilling rig at Specimen Hill

Source: Tectonic Gold





## Infrastructure

- ✓ Road: Dawson Highway
- ✓ Power: Callide Power Station
- ✓ Water: Callide Dam / Collards Creek
- ✓ Air: Gladstone Airport – 1 hour from Brisbane; 1 hour from site
- ✓ Labour: skilled workforce nearby (DIDO, Not FIFO)

Dawson Highway between Calliope and Biloela

Source: Civil Support





## LEADERSHIP

### BRUCE FULTON – Group Chairman

- Bruce is an experienced professional geologist, public company director, consultant and advisor to the minerals industry.

### BRETT BOYNTON – CEO & Managing Director

- Brett is an experienced entrepreneur and corporate financier with expertise as an investment banker in capital markets, mergers, acquisitions and private equity,

### SAM QUINN - Executive Director & Co Secretary

- Sam is a corporate lawyer with over 10 years' experience in the natural resources sector, in both legal counsel and executive management positions..

### DENNIS EDMONDS – Non-Executive Director

- Dennis is a specialist in structuring and executing corporate transactions with a wealth of international commercial and corporate experience as a corporate solicitor.

### PETER PRENTICE – Director, Signature Gold

- Peter has extensive management experience in developing resource projects in Australia and internationally, including gold, uranium, copper, tungsten, base metals and industrial minerals.

### JONATHAN ROBBESON – General Manager

- Jon is a professional geologist having held senior technical roles in AngloGold Ashanti and Perilya Ltd. and brings extensive international exploration and mining operational and risk management experience. Jonathan specialises in integrated project development and has an in-depth knowledge of leading projects from exploration stage through feasibility, development, construction and into operation..

***...highly experienced team***

# WHY TECTONIC GOLD?



High-grade IRGS portfolio in Australia with multi-million ounce potential



Ideally positioned to meet demand from producers for replacement projects



Proven successful exploration methodology



Near-term resources mine plan optimisation will drive news flow and revaluation



Australian government backed / funded programs – enhancing investment returns



Building the lowest cost dollar per ounce gold exploration business



Proven value creation business model



Significant opportunity to continue building asset portfolio using IRGS method



Management with strong track record of successful gold projects

The background of the image features a series of overlapping, semi-transparent geometric shapes in shades of dark blue and gold, creating a sense of depth and movement. The shapes are angular and layered, with the gold shapes appearing more prominent in the center.

# TECTONICGOLD

[www.tectonicgold.com](http://www.tectonicgold.com)